



# ALL TRANSISTOR RADIO

(Positive Battery Ground or Negative Battery Ground)

PART NO. HAC 720

MGB mk. II --- MGB/GT mk. II

AUSTIN HEALEY SPRITE IV (1968) --- MG MIDGET III (1968)

AUSTIN AMERICA

## *Installation and Operating Instructions*

TEMPORARY ISSUE

#### INSTALL SPEAKER

1. Remove speaker mounting panel located under instrument panel on right side. (See detail, Fig. 2.)
2. Attach speaker to mounting panel.
3. Route speaker leads through opening in console reinforcement to speaker mounting panel and connect to speaker.
4. Reinstall mounting panel.

#### MAKE ELECTRICAL CONNECTIONS

1. Position console near console reinforcement.
2. Connect power lead and condenser lead as follows:
  - (a) Cut terminal lug off radio power lead and off condenser lead. Strip 3/8" of insulation from cut end of wires. Connect 12" extension lead, power lead and condenser lead together with wire nut.
  - (b) Locate appropriate 4-terminal female connector in harness at left side of instrument panel. (Connector has three white leads connected to it, leaving one open female terminal.) Plug bullet terminal of power lead into open terminal of 4-terminal connector.
3. Plug in antenna lead into antenna receptacle on right hand side of radio.

#### ADJUST ANTENNA TRIMMER

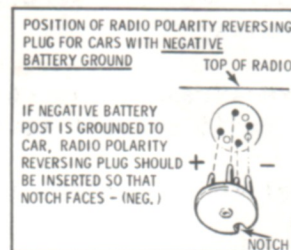
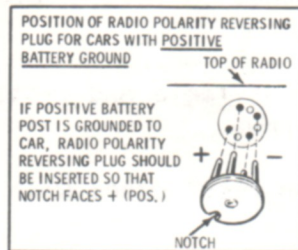
1. Connect ground lead to battery.
2. Turn radio on and allow to operate for fifteen minutes.
3. Extend antenna to full height.
4. Tune in a weak station above 1400 KHz.
5. Rotate antenna trimmer in either direction until maximum volume is obtained.

#### REATTACH CONSOLE

1. Reconnect all electrical wiring to console.
2. Install perforated support strap to console reinforcement using spring nut. See rear view of radio, Fig 2.

MGB mk. II and MGB/GT mk. II  
(USE INSTALLATION KIT HAC 701)  
NEGATIVE GROUND

IMPORTANT: BEFORE MAKING RADIO INSTALLATION, CHECK GROUND POLARITY OF THE CAR'S BATTERY TO DETERMINE IF IT IS POSITIVE OR NEGATIVE. THEN POSITION THE POLARITY REVERSING PLUG TO CORRESPOND WITH THE BATTERY GROUND AS SHOWN IN DETAILS



### INSTALL ANTENNA

Follow the antenna installation instructions provided in the antenna package.

### INSTALL RADIO INTO CONSOLE (Figure 2)

1. Disconnect ground lead from battery.
2. Detach ashtray assembly.
3. Detach console by removing two screws from each side of console. Disconnect wiring where necessary.
4. Remove radio opening chrome trim with monogrammed cover. Retain chrome trim.
5. Drill following holes: (See Figure 2):
  - (a) Drill 3/16" hole (four places) in side of console horizontally in line with existing console mounting hole.
  - (b) Drill 1/4" hole in console reinforcement as shown in rear view of radio.
6. Mount radio to console as follows:
  - (a) Place backing plate over mounting bushings on front of radio with bent edges toward radio and fibre insulator at bottom.
  - (b) Center radio in radio opening; place chrome trim and trim plate over mounting bushings. (The word "Top" on trim plate must be properly positioned.) Secure in place with two 1/2-28 nuts.
  - (c) Install knobs as shown.

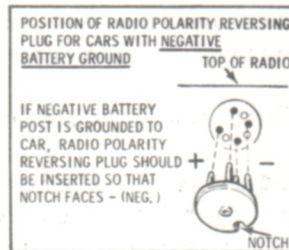
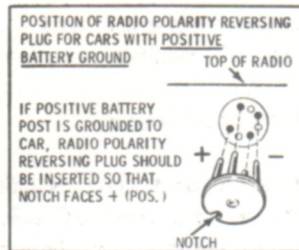
REATTACH CONSOLE (Continued)

3. Remove existing radio chassis cover screw as indicated.
4. Angle radio and antenna lead through radio opening of console reinforcement and secure console to reinforcement at relocated holes.
5. Bend perforated strap to fit contour of radio and fasten in place with radio chassis cover screw.
6. Mount condenser to convenient spot on metal panel with screw provided.
7. Secure console at relocated holes using four original screws.
8. Reattach ashtray assembly.

AUSTIN HEALEY SPRITE IV (1968) and MG MIDGET III (1968)  
(USE INSTALLATION KIT HAC 704)

NEGATIVE GROUND

**IMPORTANT:** BEFORE MAKING RADIO INSTALLATION, CHECK GROUND POLARITY OF CAR'S BATTERY TO DETERMINE IF IT IS POSITIVE OR NEGATIVE. THEN POSITION THE POLARITY REVERSING PLUG TO CORRESPOND WITH THE BATTERY GROUND AS SHOWN IN DETAILS.



**INSTALL ANTENNA**

Follow the antenna installation instruction provided in the antenna package.

**INSTALL RADIO & SPEAKER (Figure 1)**

1. Disconnect ground lead from battery.
2. Detach radio-speaker console by removing four screws and finishing washers from each side. Disconnect wiring where necessary.
3. Remove radio opening chrome trim with monogrammed cover. Retain chrome trim.  
NOTE: For consoles with no radio opening, please see Technical Service Bulletin No. 2B11 providing instructions for reworking console to accept radio and for part number of radio opening chrome trim needed for radio installation. (AHH 5255).
4. Drill 3/16" diameter hole at two places on each side of console as shown in "Drilling Detail" of Figure 1.
5. Remove backing from rubber support pad and attach support pad to console bottom. Center the pad between console sides about three to four inches away from radio opening.
6. Place radio, speaker and mounting plate on forward portion of console.

7. Center radio, speaker and mounting plate assembly into radio opening, place chrome trim and trim plate over mounting bushings (the word "Top" on trim plate must be properly positioned). Secure in place with two  $\frac{1}{2}$ -28 hex nuts.
8. Install knobs as shown.

#### MAKE ELECTRICAL CONNECTIONS

1. Connect speaker leads.
2. Feed antenna lead-in from behind instrument panel and plug it into antenna receptacle on side of radio.
3. Connect power lead and condenser lead as follows:
  - (A) Cut terminal lug off radio power lead and off condenser lead. Strip  $\frac{3}{8}$ " of insulation from cut end of wires. Connect 12" extension lead, power lead and condenser lead together with wire nut.
  - (B) Locate appropriate 4-terminal female connector in harness at right side of vehicle. (Connector has three white leads connected to it leaving one open female terminal.) Plug bullet terminal of power lead into open terminal of 4-terminal connector.

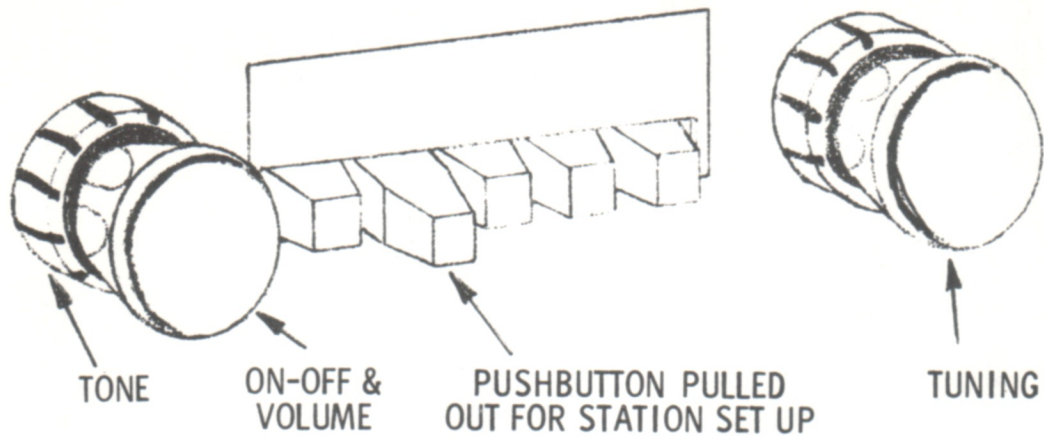
#### ADJUST ANTENNA TRIMMER

1. Connect ground lead to battery.
2. Turn radio on and allow to operate for fifteen minutes.
3. Extend antenna to full height.
4. Tune in a weak station above 1400 KHz.
5. Rotate antenna trimmer in either direction until maximum volume is obtained.

#### REATTACH CONSOLE

1. Cut and bend perforated strap as indicated in "Rear View of Radio" detail, Fig. 1.
2. Attach perforated strap to side of radio using existing radio cover screw.
3. Reconnect all electrical wiring to console.
4. Secure console at relocated holes using a) four original screws and finishing washers, and b) four screws and spacers provided plus remaining four original finishing washers.
5. Mount condenser to convenient spot on metal panel with screw provided.

## OPERATING INSTRUCTIONS



### ON-OFF SWITCH AND VOLUME CONTROL

The on-off switch and volume control are combined and are operated with the left hand knob.

### TONE

The tone quality can be adjusted by rotating the tone control in either direction.

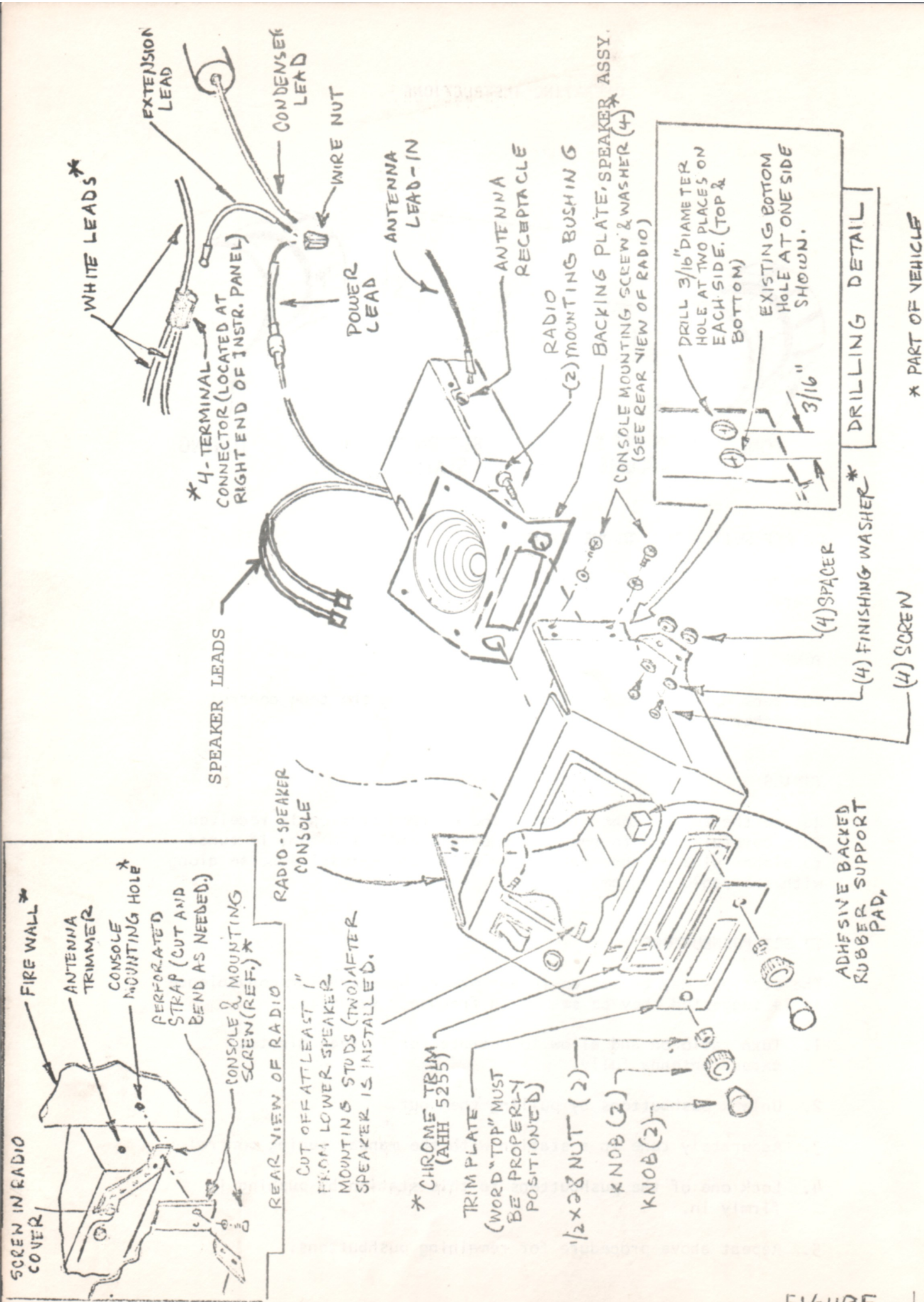
### TUNING

Rotate the tuning control until the desired station is received. Tune carefully and to the center of the radio station; if tuned to either side of the center, you will hear excessive noise along with the radio program.

### TO SET PUSHBUTTONS

The stations may be set up in any order, however, for convenience it is suggested they be set up in frequency sequence.

1. Turn radio on and allow to operate for fifteen minutes; extend antenna fully.
2. Unlock pushbuttons by pulling them out.
3. Accurately tune in a station with the manual tuning control.
4. Lock one of the pushbuttons to this station by pushing it firmly in.
5. Repeat above procedure for remaining pushbuttons.

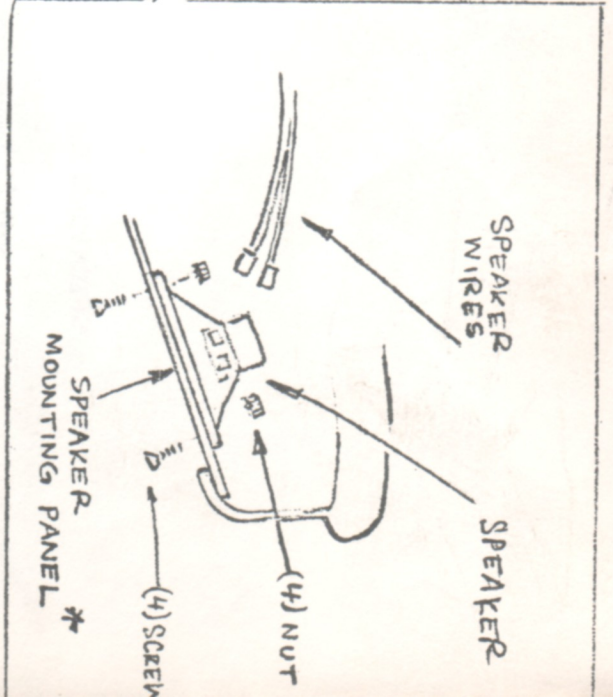
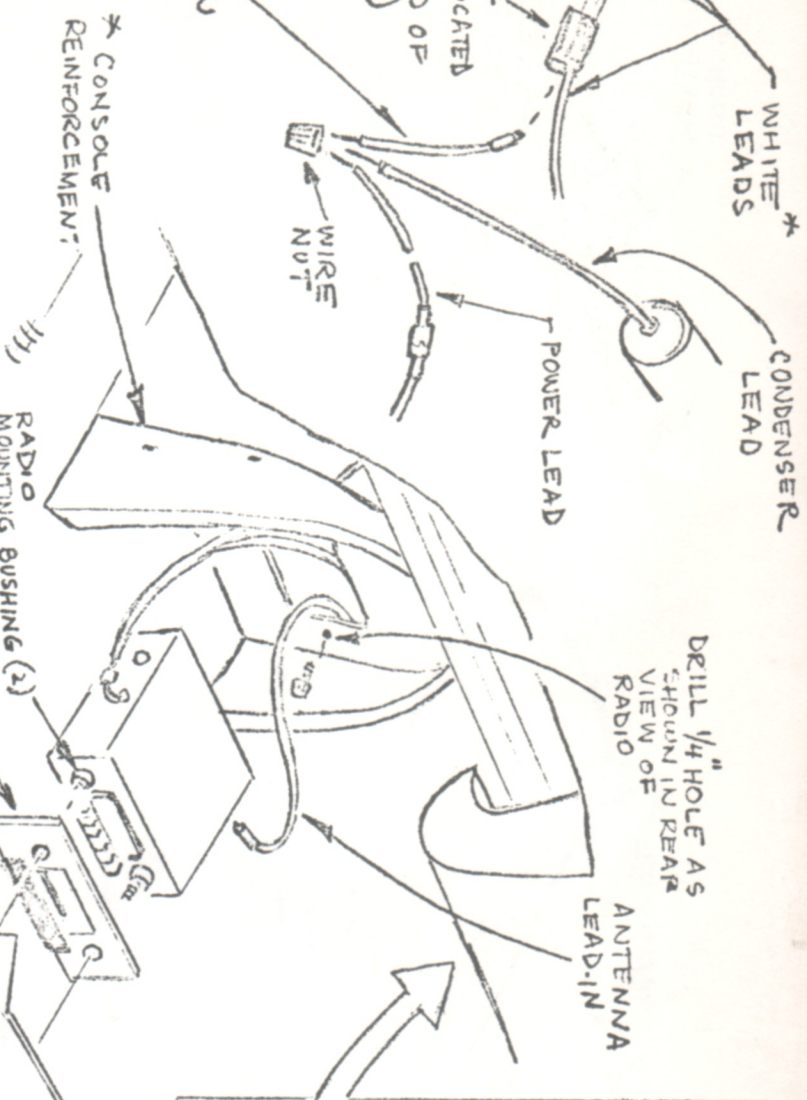
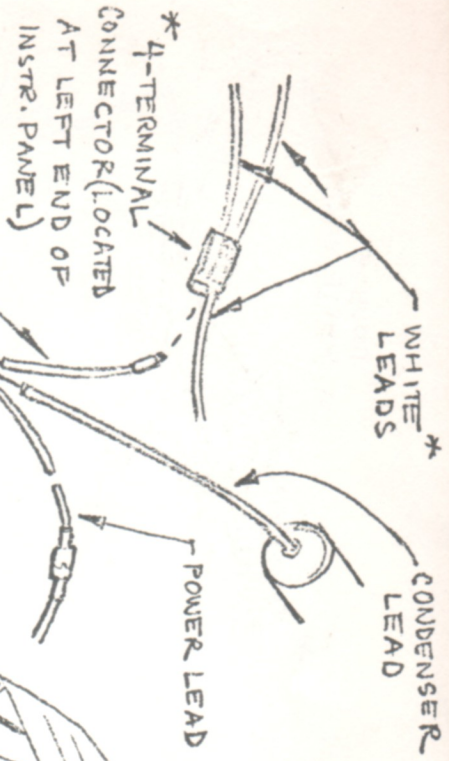


\* PART OF VEHICLE

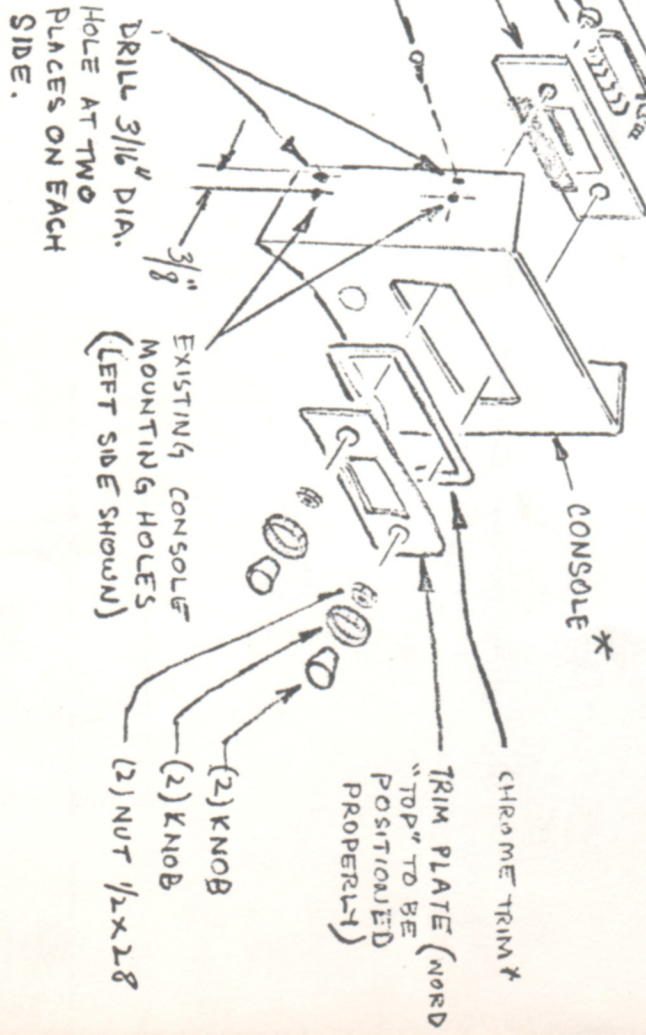
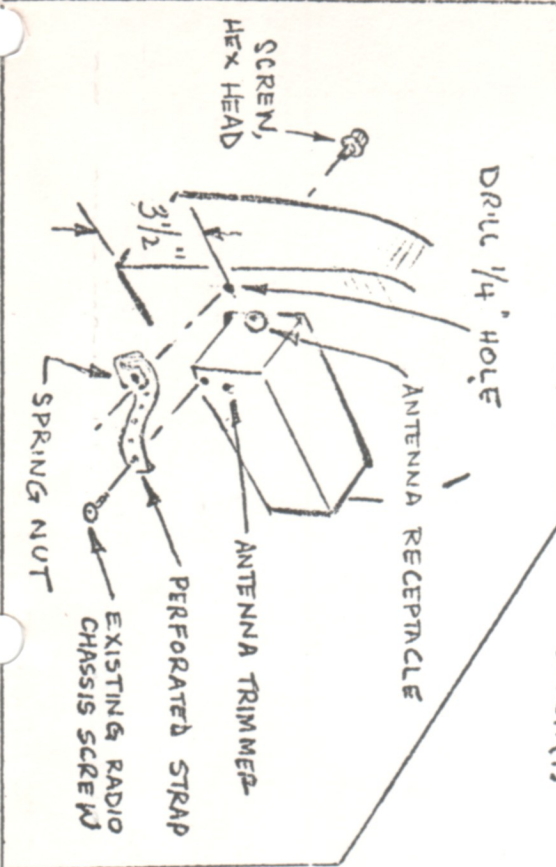
AUSTIN HEALEY SPRITE IV (1968) and MG MIDGET III (1968)

FIGURE 1



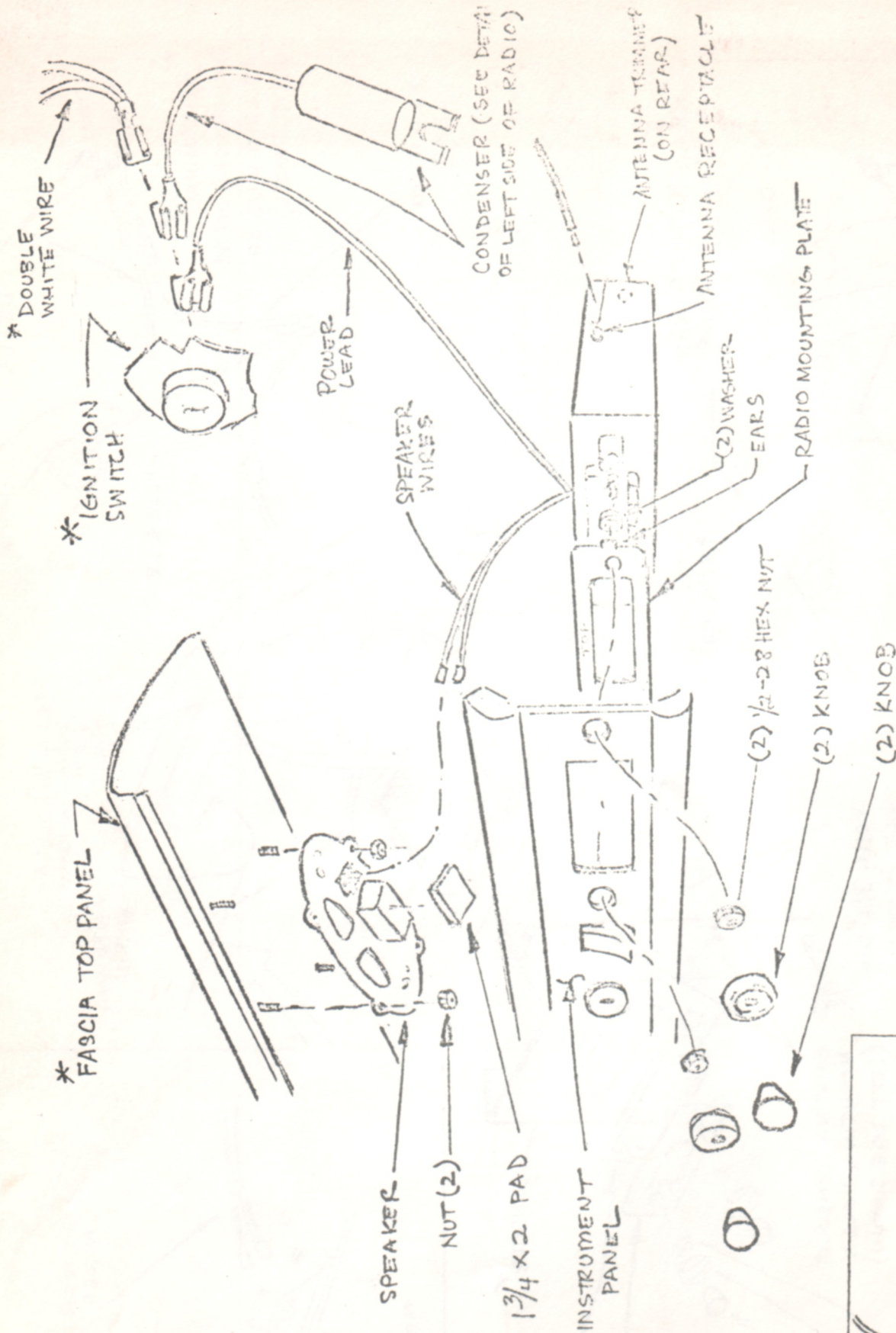


REAR VIEW OF RADIO IN CONSOLE REINF.



\* PART OF VEHICLE

MGB mk. II and MGB/GT mk. II



\* PART OF VEHICLE

AUSTIN AMERICA

FIGURE 3